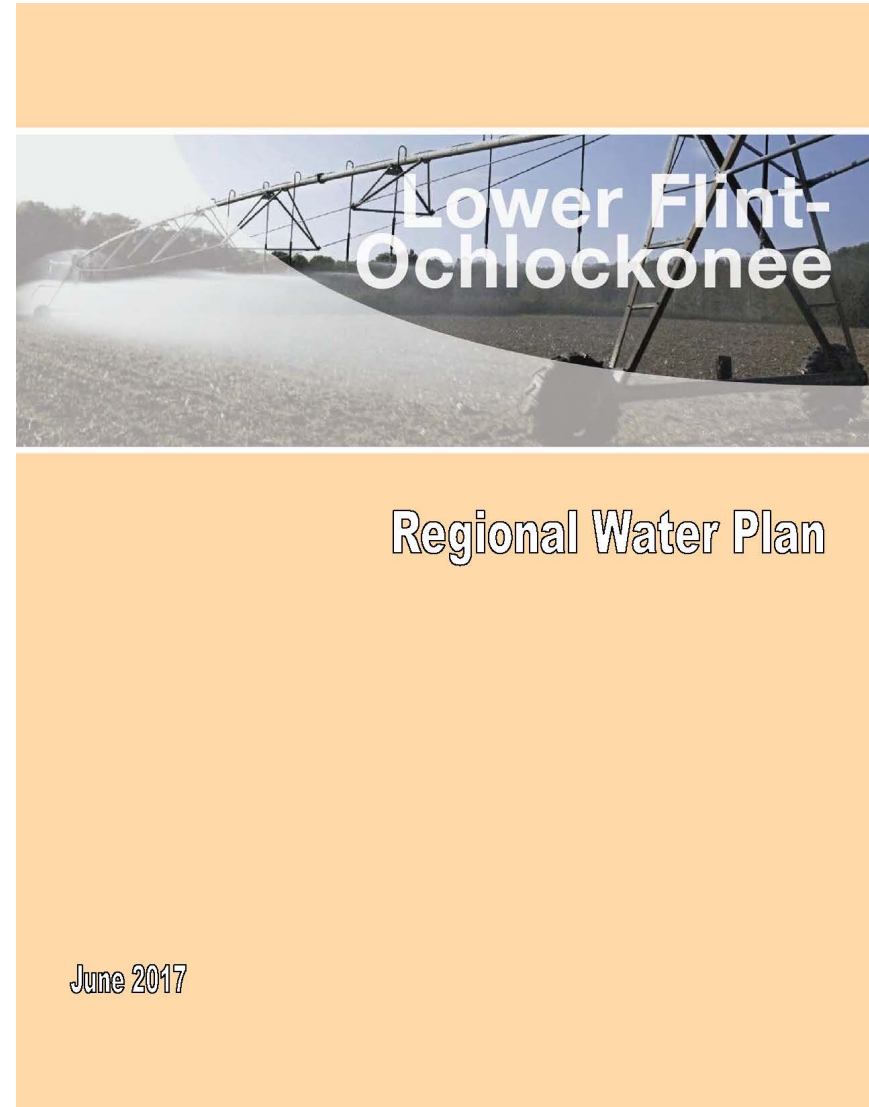


Regional Water Planning in Georgia



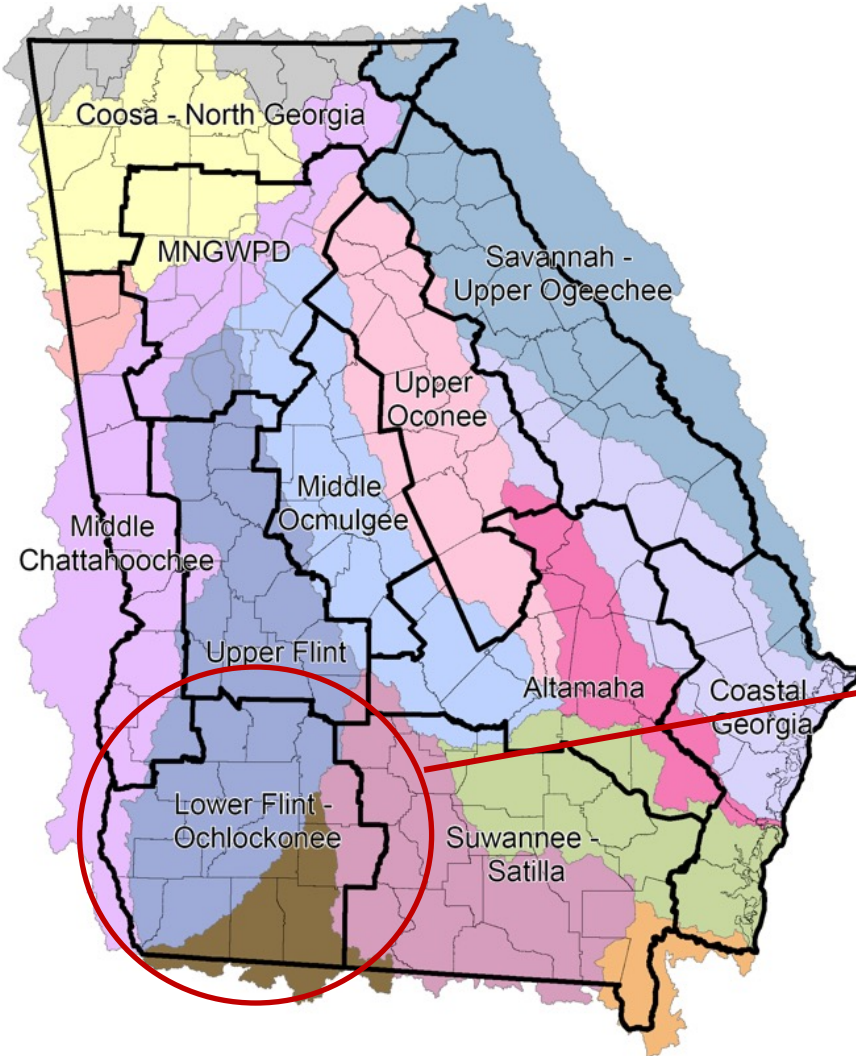
STATEWIDE WATER PLANNING POLICY STATEMENT

“Georgia manages water resources in a sustainable manner to support the state’s economy, to protect public health and natural systems, and to enhance the quality of life for all citizens.”

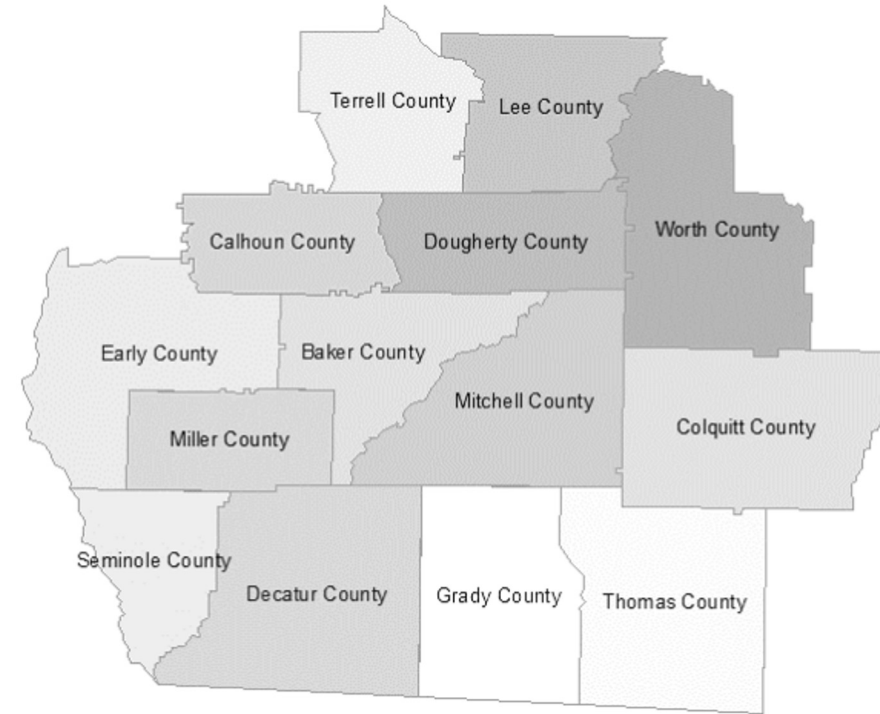


*2004 Comprehensive Statewide Water
Management Planning Act*

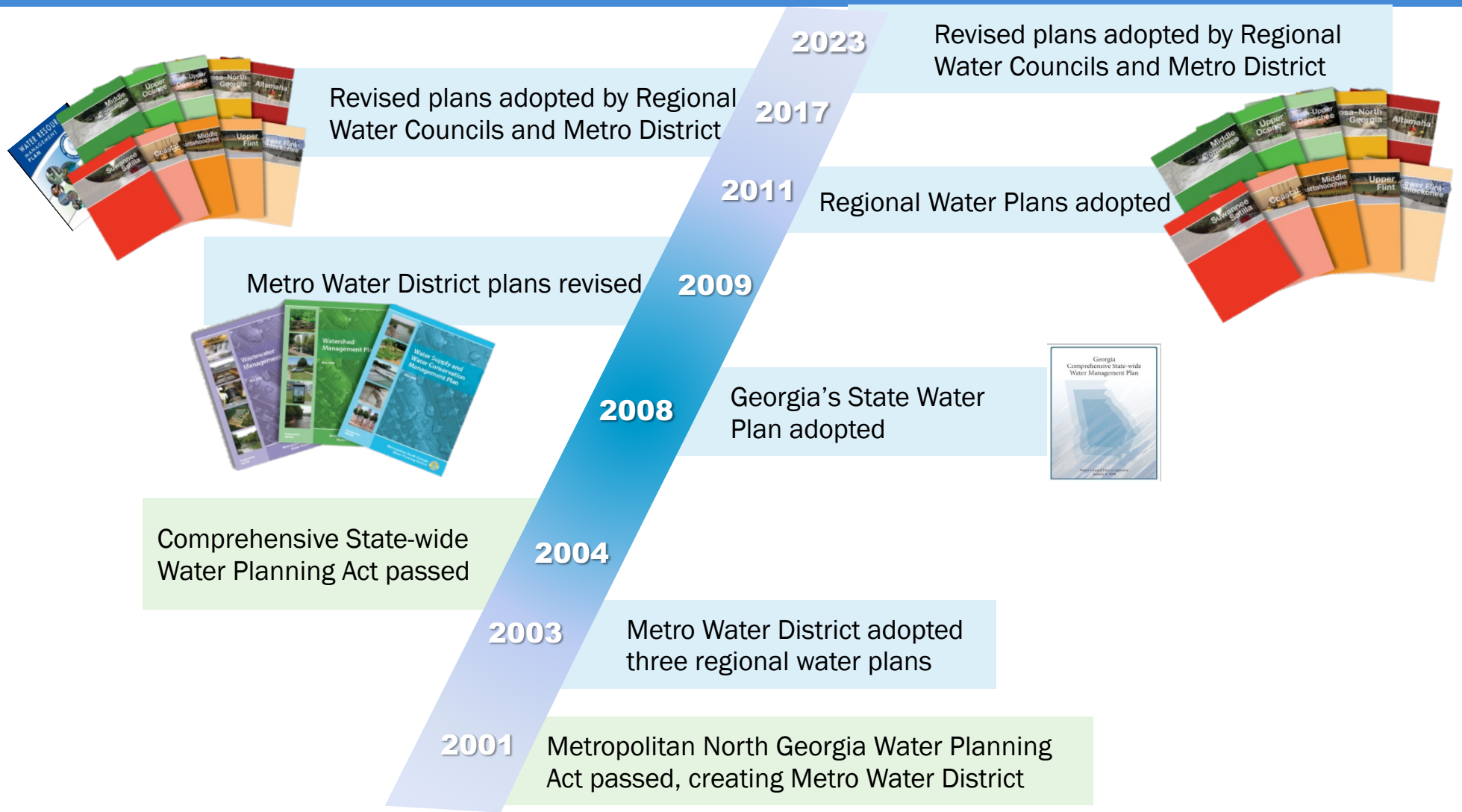
WATER PLANNING REGIONS IN GEORGIA



Lower Flint-Ochlockonee
Water Planning Region



MILESTONES IN GEORGIA'S WATER PLANNING



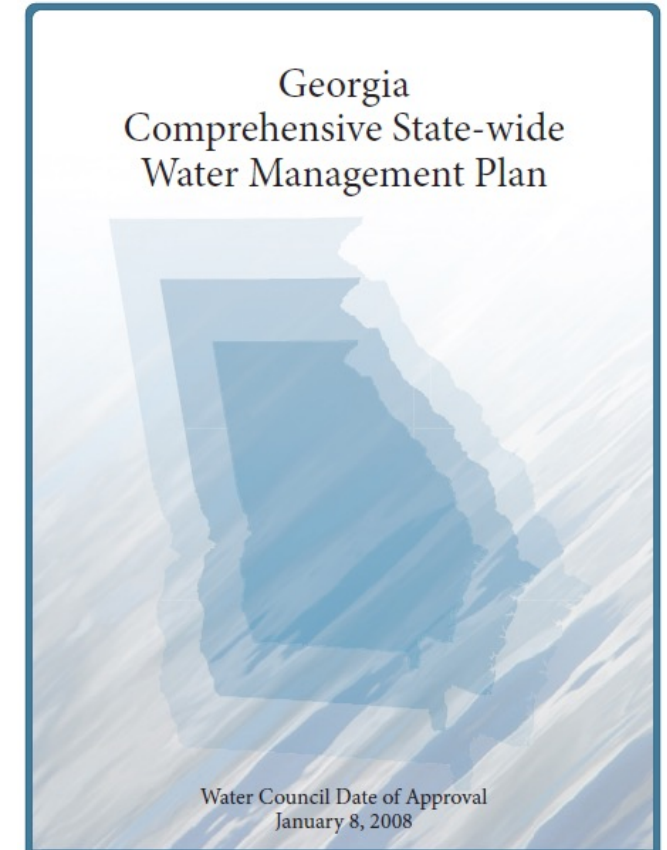
STATE/REGIONAL WATER PLANNING

Comprehensive Statewide Water Management Planning Act (2004)

- Georgia Water Council
- Stakeholder process
- State Water Plan (2008)

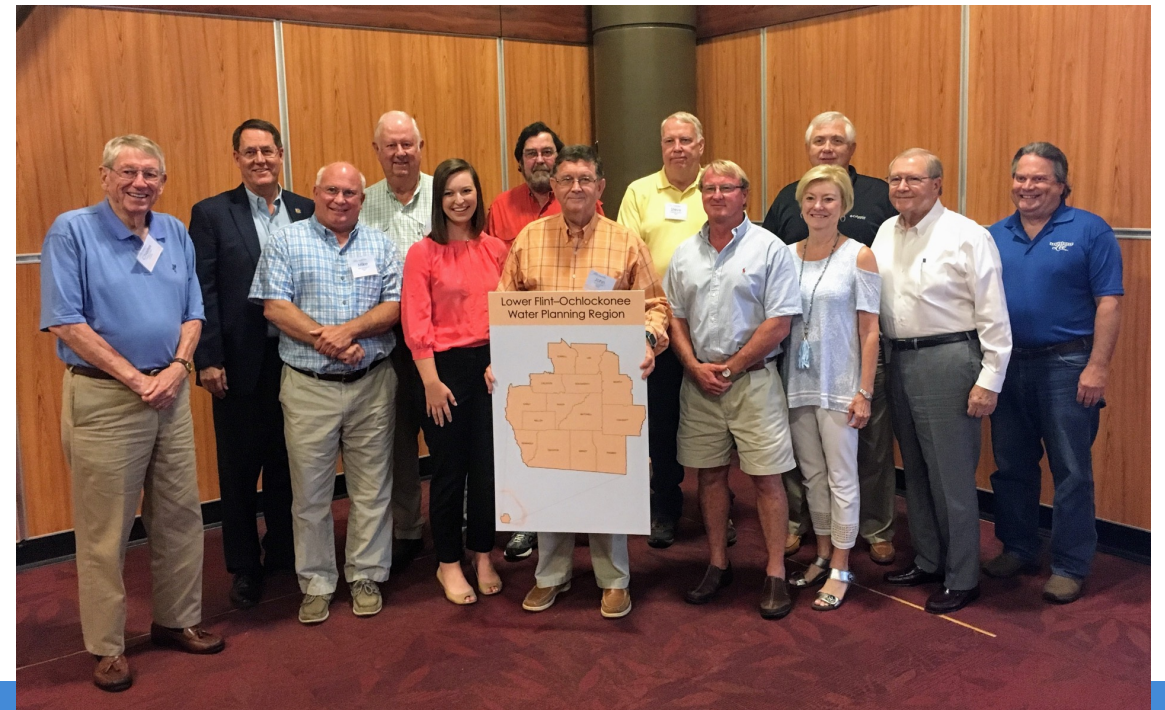
Regional Water Planning

- Councils appointed: 2009
- Initial plans adopted after three year planning process: 2011
- Reviewed plans adopted: 2017
- New planning cycle underway 2022-2023
- Plans to be review and revised every five years



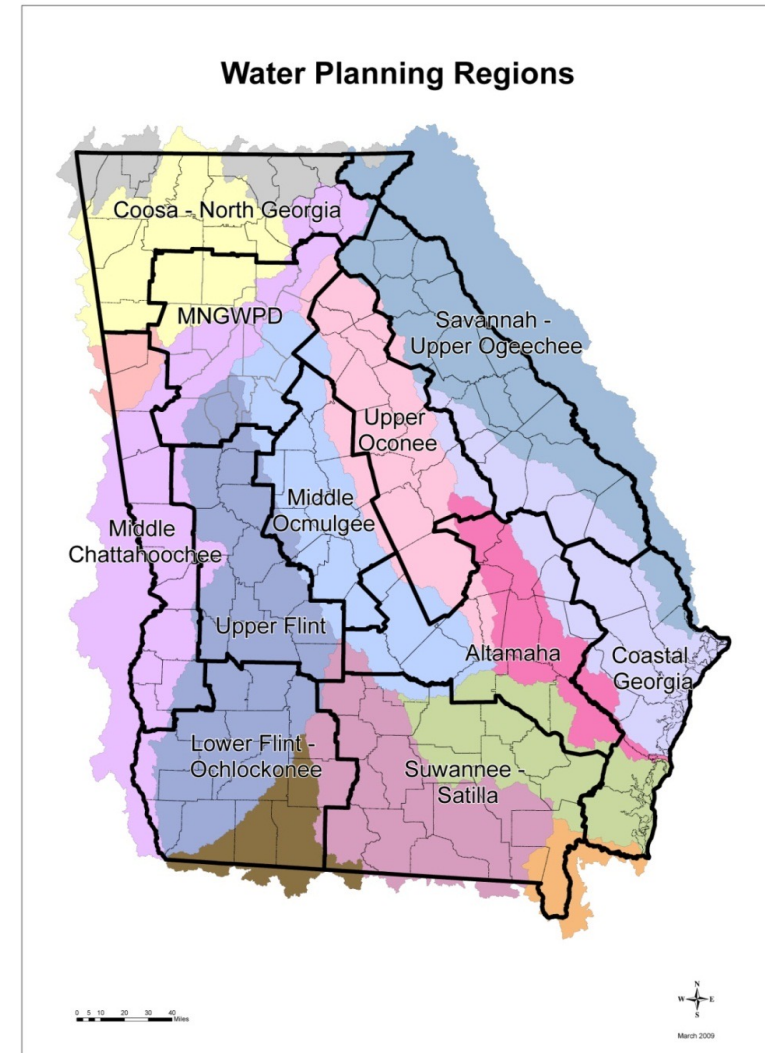
LOWER FLINT-ochlockonee REGIONAL WATER PLANNING COUNCIL

- 28 members from 14 counties in the Flint, Chattahoochee, Ochlockonee, and Suwannee watersheds
- Completed 1st review and revision of its regional water plan in June 2017
- Working on 2nd review and revision of the regional water plan currently: 2022-2023



BASIC ELEMENTS OF REGIONAL WATER PLANS

- Vision and goals
- Current and future water and wastewater needs
- Resource assessments
- Management practices
- Recommendations to the State

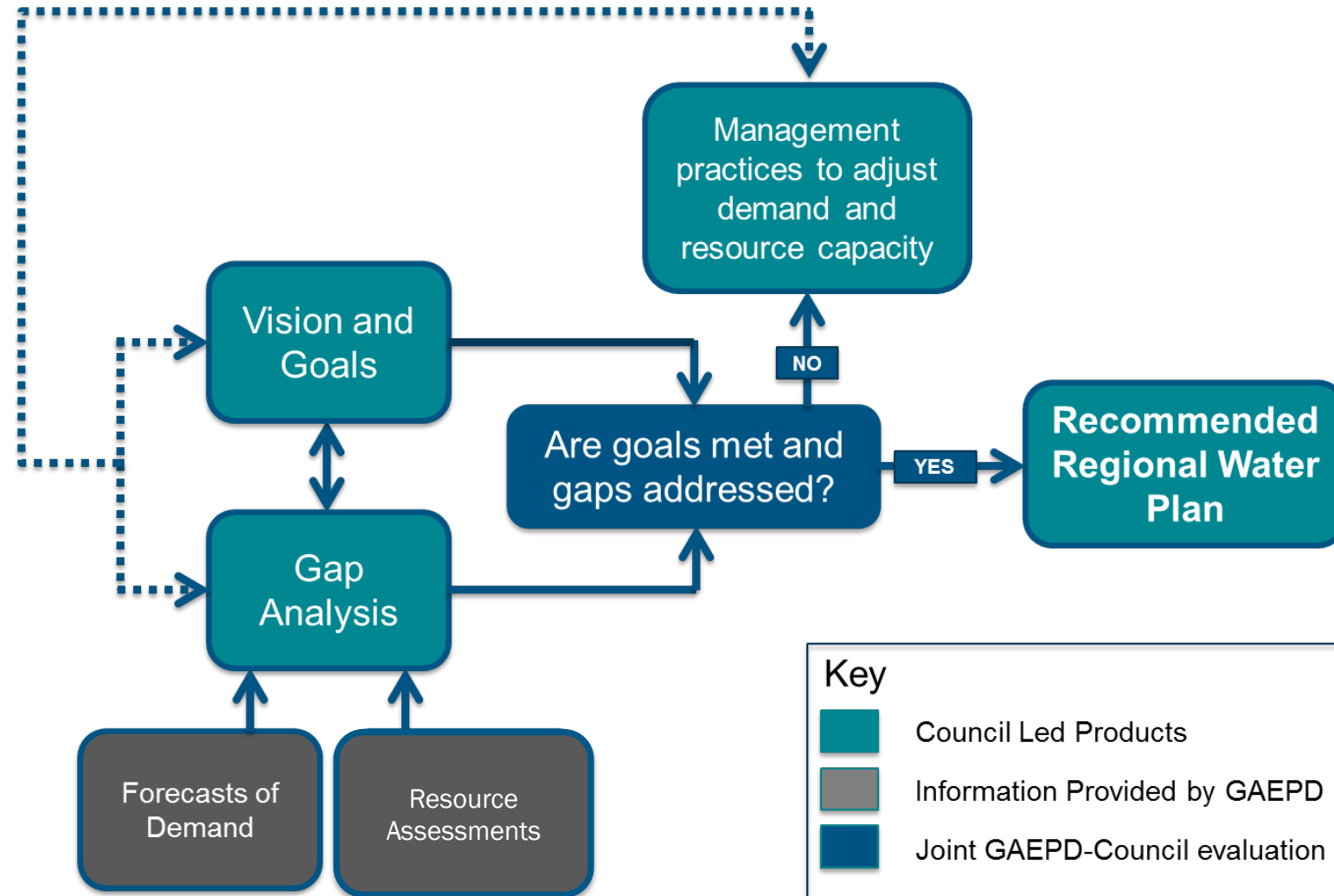


LOWER FLINT-OSCHLOCKONEE REGIONAL WATER PLAN

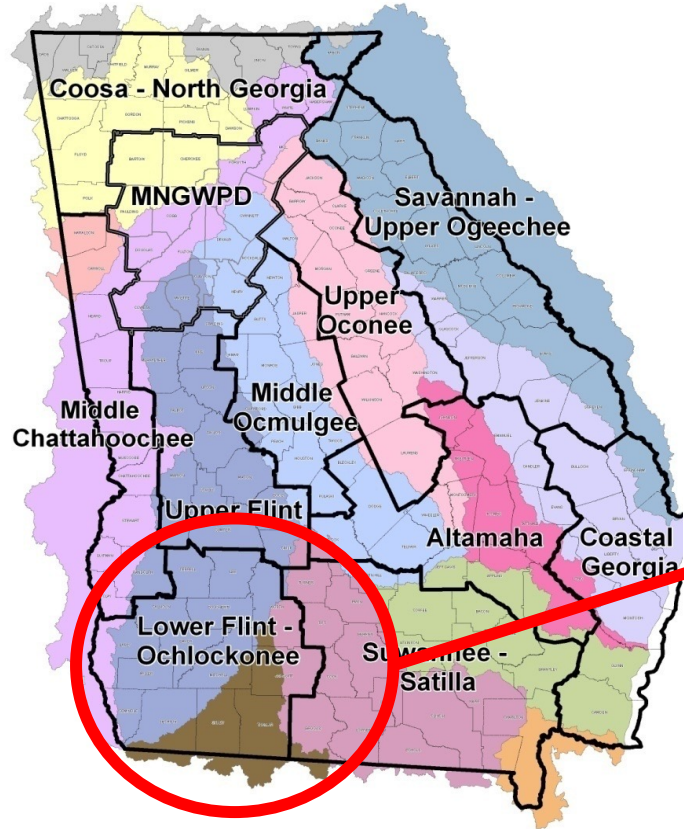
Goals

1. Ensure access to water resources for existing and future water users in the Lower Flint-Ochlockonee Water Planning Region.
2. Sustain the region's aquifers, the Floridan, the Claiborne, the Clayton, and the Cretaceous, in a healthy condition that will continue to support the natural systems and economic activities of the Lower Flint-Ochlockonee Water Planning Region.
3. Maintain the production-agriculture-based economy of the Lower Flint-Ochlockonee Water Planning Region.
4. Support sustainable economic growth in the Lower Flint-Ochlockonee Water Planning Region.

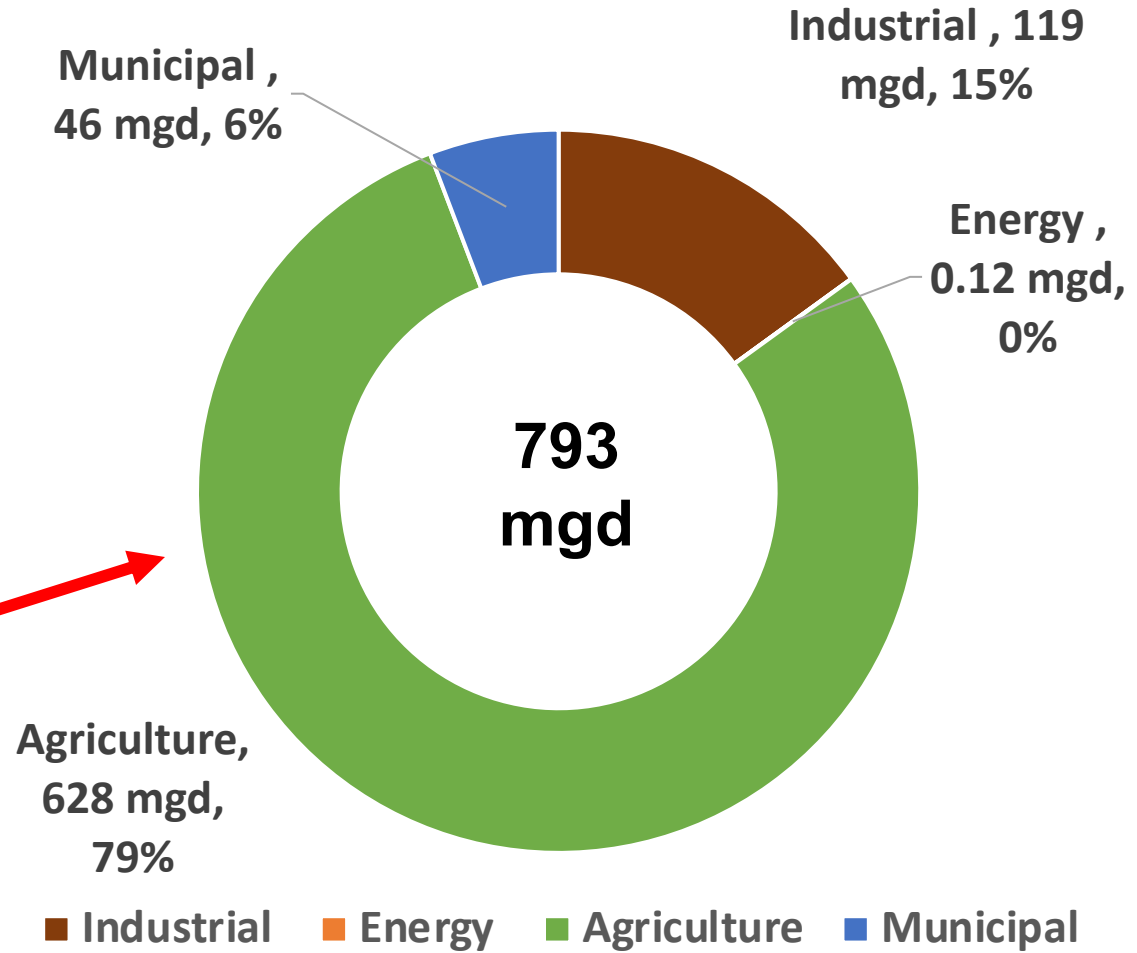
STEPS IN THE DEVELOPMENT OF THE REGIONAL WATER PLANS



Water Use in Lower Flint Ochlockonee Region



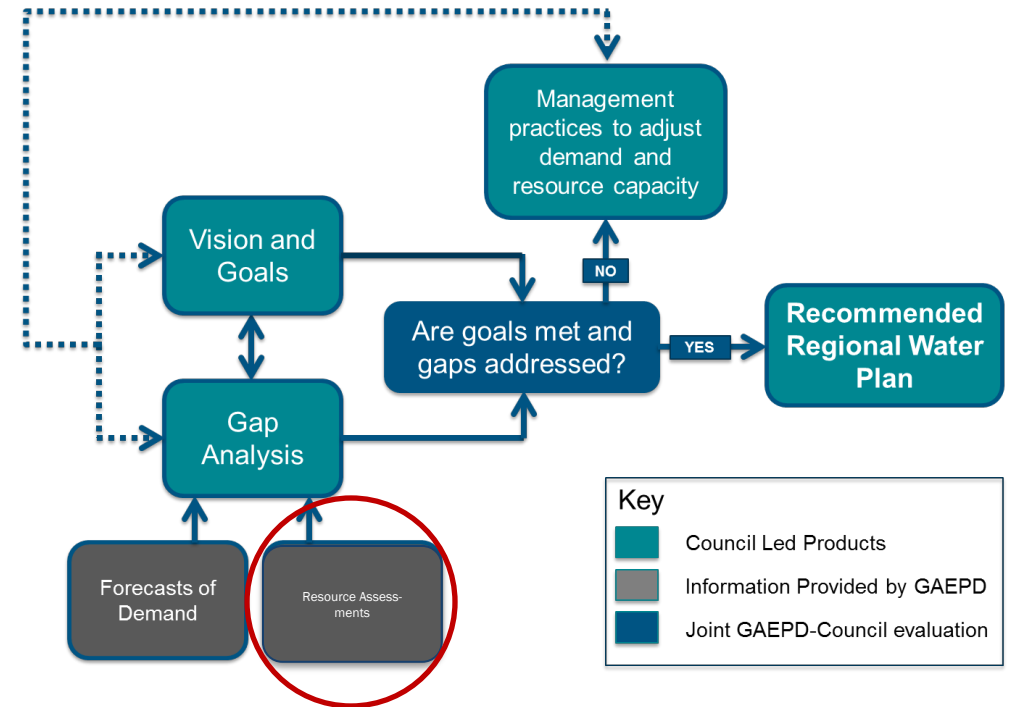
Total Water Demand (MGD): 2020



Resource Assessments

Assess Current and Future Conditions:

- Surface water availability
- Groundwater availability
- Surface water quality



Surface Water Availability for Water Supply and Wastewater Discharge

Lower Flint Ochlockonee Region

	Facility Type	ACF		Ochlockonee	
		Analyzed	Challenge Indicated	Analyzed	Challenge Indicated
		<i># of Facilities</i>			
Water Withdrawals	Municipal	0	0	0	0
	Industrial	1	1	1	1
	Energy	1	0	0	0
Wastewater Discharges	Municipal	17	10	7	4
	Industrial	3	0	1	0

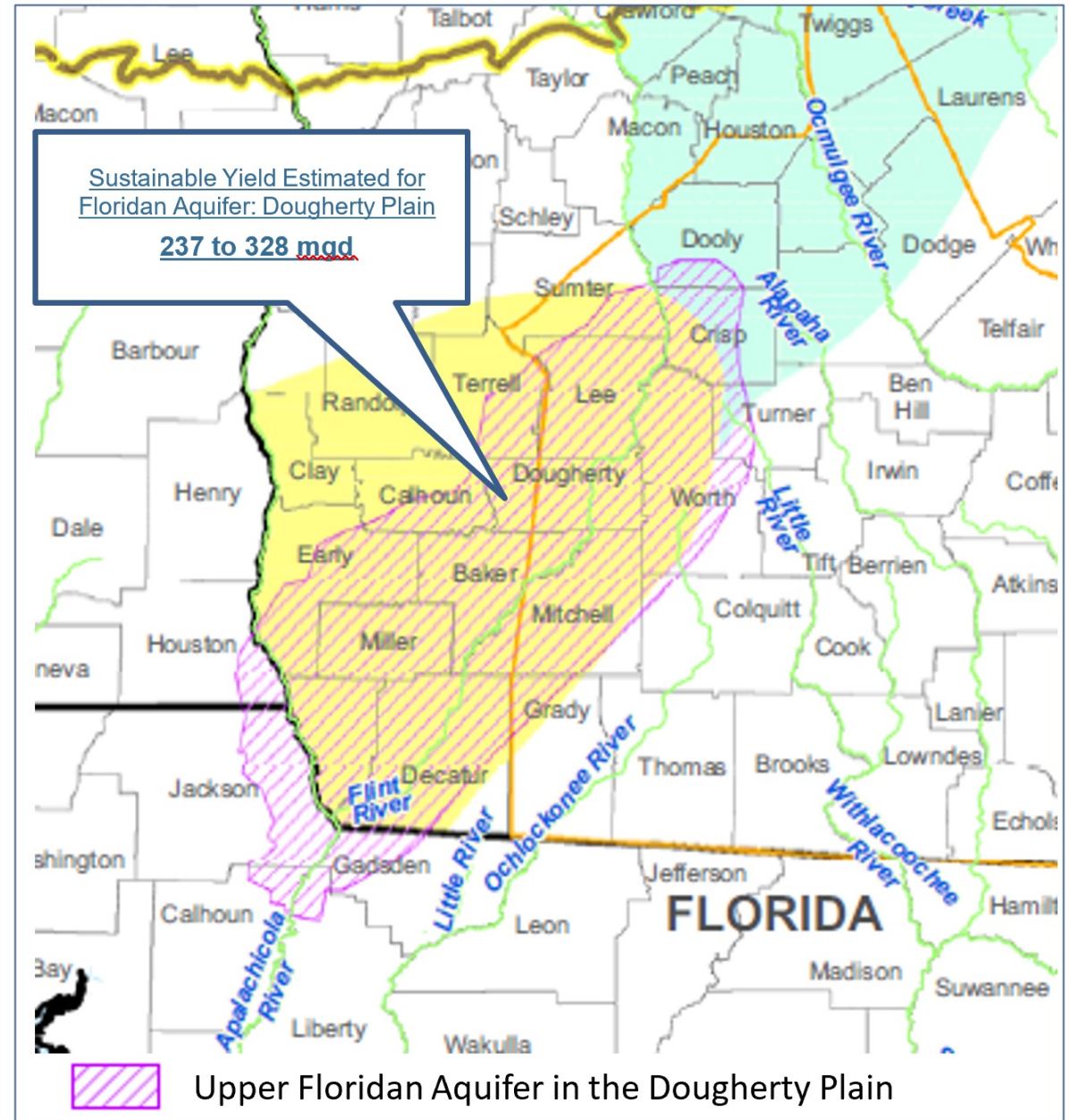
Surface Water Availability Streamflow Results in ACF Basin

Location	Streamflow Metric <i>cfs</i>	% Time Below Streamflow Metric	
		Scenario	
		Baseline	Baseline Drought
Milford <i>Ichawaynochaway Creek</i>	50	1.3%	4.8%
Iron City <i>Spring Creek</i>	8	4.0%	8.5%
Bainbridge <i>Flint River</i>	1,400	0.5%	1.1%

Groundwater Availability

Floridan Aquifer, Dougherty Plain

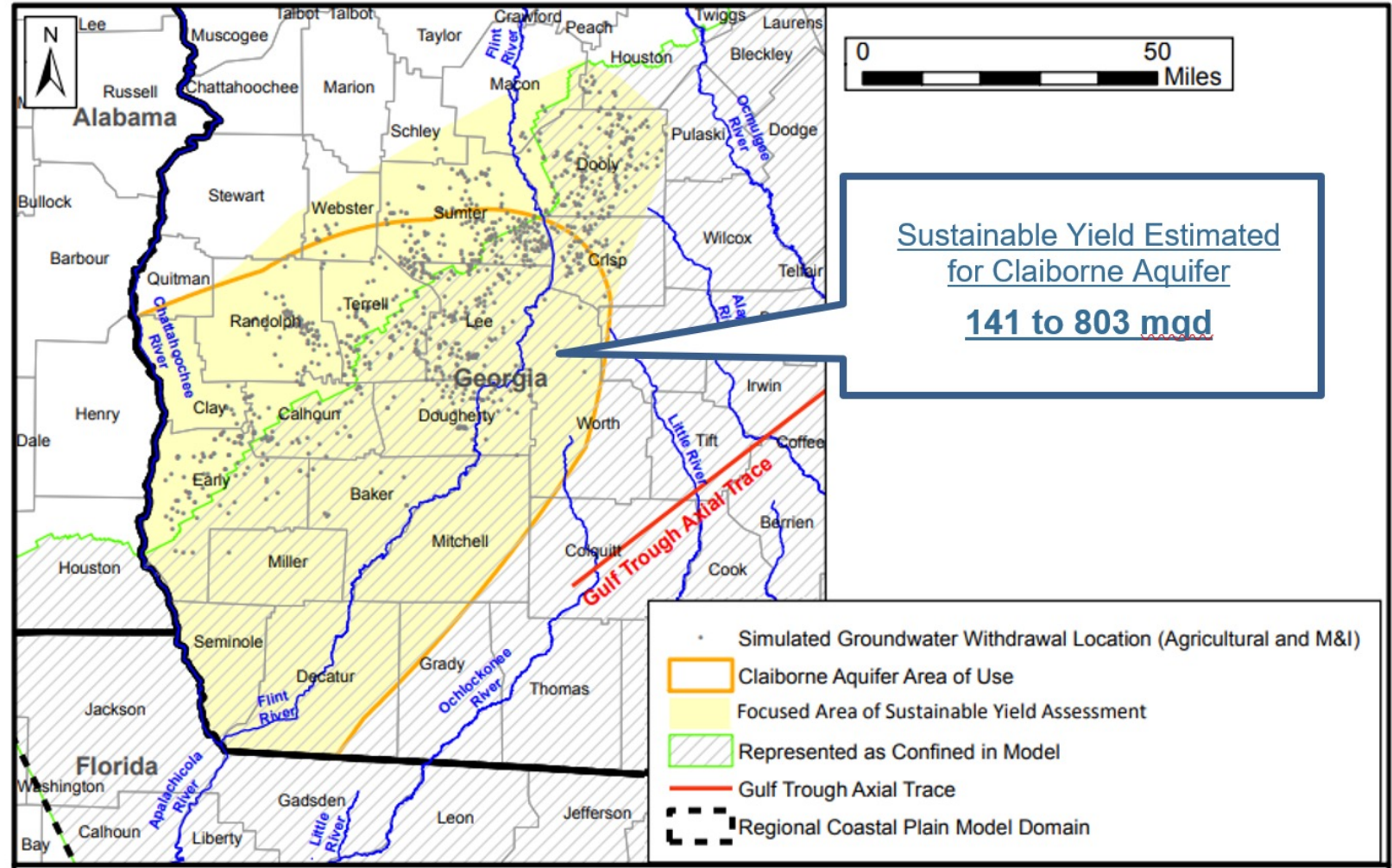
Current and Forecasted Demands mgd	Lower Flint Ochlockonee Region
2020	392
2060	518



Groundwater Availability

Claiborne Aquifer

Current and Forecasted Demands mgd	Lower Flint Ochlockonee Region
2020	41
2060	52



REGIONAL WATER PLANS

- Management Practices
- Implementation Schedule
- Recommendations to the State



Initial plans adopted in 2011

Revised plans adopted in 2017

Revised plans to be adopted in 2023

LOWER FLINT-OKMLOCKONEE REGIONAL WATER PLAN

SELECTED MANAGEMENT PRACTICES

Demand Management

- Continue to improve agricultural water use efficiency through innovation and technology

Supply Management and Flow Augmentation

- Evaluate reservoir storage options in the Flint River Basin, including better utilization of existing storage, that can provide for flow augmentation in dry periods
- Develop groundwater source alternatives to replace surface water withdrawals during drought , where site specific evaluation indicates that this practice is practical and will not harm environmental resources
- Develop distributed water storage as needed to support water users in managing water availability for water users and in-stream needs.

Water Quality

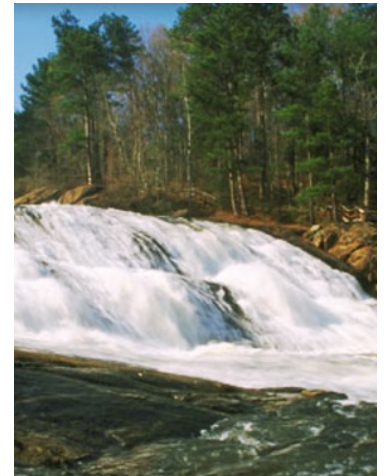
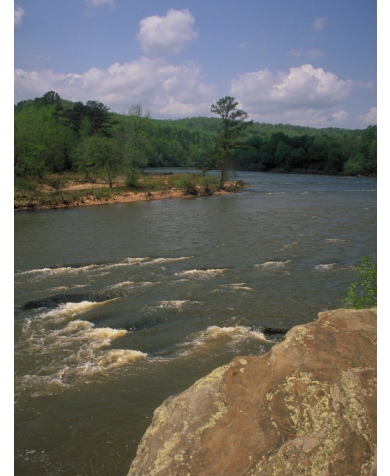
- Improve implementation of nonpoint source controls.

Also: Information
Needs & Water Policy
Recommendations

IMPLEMENTATION OF REGIONAL WATER PLANS

After the plans are adopted by Councils and approved by EPD Director...

- GEFA uses the plans to guide decisions about state grants and loans for water-related projects
- EPD uses the plans to guide water related permitting decisions
 - *Rule 391-3-32: EPD shall ensure that the issuance of permits is consistent with the Regional Water Plans*
- Councils conduct outreach about regional water plans
- Local, regional, and state implementing actors implement the plans management practices and recommendations
- Seed grants available from EPD to support Plan implementation (*Applications due in October*)



FOR MORE INFORMATION

REGIONAL WATER PLANS AVAILABLE:

<https://waterplanning.georgia.gov/>

PLANNING CONTRACTOR:

Black & Veatch and Georgia Water Planning & Policy Center

Kristin Rowles: krowles@h2opolicycenter.org

